



September 2020

P. O. Box 871 - 607 Mena Street, Mena, AR 71953
479-394-3880
email@MenaArtGallery.org
www.MenaArtGallery.org
Gallery Hours:
Wed – Sat 10 am to 3 pm



Art of the Heartland National Show Update

This most glorious show continues through the end of October. Do NOT wait and wish you hadn't. It's free. It's relatively safe as masks are required and the number of folks in the Gallery at any one time is low. It will give you smiles, questions, peace. Come and see it. Put it on your calendar. Bring a friend.

We are on Facebook and Instagram just about every day, featuring another work from the show. This is where you will find the stories the artists have to tell about their work. But there is just nothing like standing in front of a painting almost as big as you are. It takes your breath away.



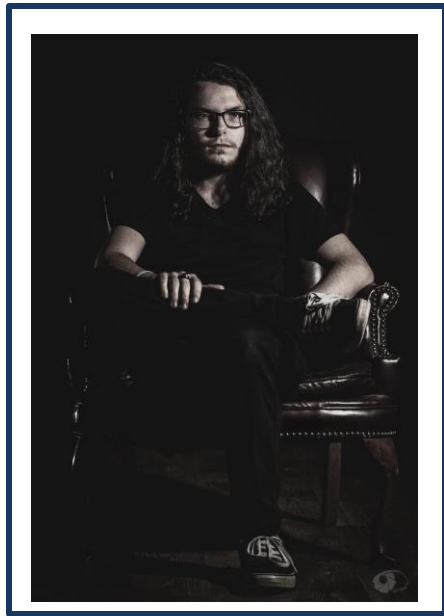
New at the Gallery . . .

Our air conditioning went out – there were holes in the coil which let the freon escape. Yikes! I called Wrights Heating and Air Conditioning - they've worked on our system before. Jason came in to diagnose and suggested we replace our gas furnace at the same time as it was over 40 years old.

The ultimate expense for everything was about \$3,500. Wrights gave us some generous discounts in a couple of areas, which are MUCH appreciated. We are so fortunate to own our building and keeping up the HVAC adds to its value. But, OUCH! That hurt!

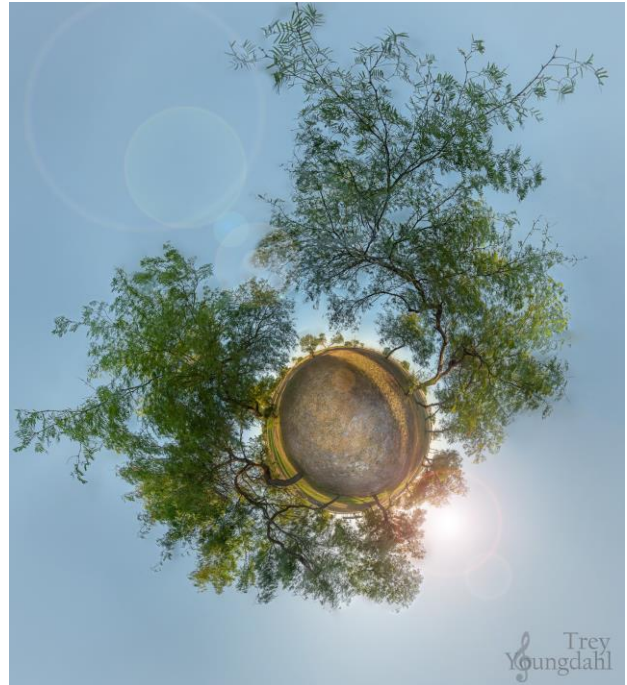


If any of you would like to donate specifically toward this expense, I will put a "plaque" on the outside of the closet where it resides with your name and our grateful thanks. **Just \$10 gets your name on the wall!** (Give \$100 and I will make your name really, really big. 😊) And thank you . . .



MAG Artist of the Month

**Trey Youngdahl,
photographer**



Would YOU like to be next month's Feature Artist?

Please contact Lynn at the Gallery.

"Art should comfort the disturbed and disturb the comfortable."

– Cesar Cruz

The Exhibits Committee needs YOU!

Lynn says:

Until I began work here at the Mena Art Gallery, I had no idea how important the various committees were. For example, the National Show Committee sets the Prospectus for each of the two shows held yearly. They plan the advertising, obtain a judge, etc.

Committees, run by members, are the backbone of the Gallery.

The Exhibits Committee needs some new members. A number of our people have served for many years and are ready to hand over some of the reins. There is not a huge time commitment. You can be creative, a worker bee, or maybe have an eye for hanging the show. The Exhibits Committee plans the next year's schedule (already done for 2021.) They set the rules (pretty much based on the last show), hang the show, decorate if needed. It can be what you make of it and a lot of fun. You get to see the new work when it first comes in.

Are YOU one of the next Exhibits Committee members? Call me or come by the Gallery.



A note from the Chairman, Tiffany Lane:

Fall is here! Many artists find great inspiration during this time – because it's all about COLOR! The trees put on a magnificent display, like a painting that transforms before your eyes, day by day.

As you may know the Chamber of Commerce has cancelled this year's Ouachita Arts Celebration, which is a disappointment, but necessary. Since this is typically an event that generates a lot of sales, I encourage you to consider shopping early for Christmas at our gift store. What better present than a one-of-a-kind treasure made by one of our local artists? From jewelry, cards, paintings, prints, fiber arts – so many options are available for you to select. This year has been unusual, to say the least, so don't let the holiday season sneak up and catch you unawares! Stop by during our regular business hours, and support our members with a purchase that will help our gallery thrive and bring delight to one of your friends or loved ones.

(P. S. In the next few weeks, I'll be traveling to California to bring my mother here. She is a very humble and extremely talented artist. I can't wait to introduce her to our gallery family!)



Christmas Show Intake is November 3

Lots of folks depend on us for their holiday shopping. If it's not here we can't sell it for you!

You can also bring in work on
Saturday, October 31.

**The Gallery will be open LATE Friday and
Saturday nights until 7:00 pm and Sunday
from noon until 3:00 pm for the weekends of:**

Oct 2-4

Oct 9-11

Oct 16-18

Oct 23-25

Make it a Date Night!

Mena Art Gallery is owned and operated by SouthWest Artists, Inc., a non-profit corporation, and support is provided, in part, by the **Arkansas Arts Council**, an agency of the Department of Arkansas Department of Parks, Heritage, and Tourism and the National Endowment for the Arts, as well as local businesses and individuals. Donations are tax deductible and help ensure the continuing work of bringing art to the community of Mena and the surrounding area. Sponsorships and donations can be made on our website at www.menaartgallery.org.

If you prefer to have your name removed from our mailing list or would like to be removed from our email list please send an email to: email@MenaArtGallery.org or call 479-394-3880.

Membership in Mena Art Gallery is available at several levels:

Student: \$10:00 Individual: \$25.00 Family: \$45.00 Sustaining: \$5 (or more) Monthly

Membership forms are available at the Gallery or on the website www.MenaArtGallery.org

We encourage you to become a member in this progressive artistic community and hope you will remember Mena Art Gallery in your estate planning by leaving a legacy for the arts within the community for future generations.

BOARD OF DIRECTORS

Tiffany Lane, Chair

David Maddox

Diane Warren

Linda Ostman, Vice-Chair

Pamela Bennett

Joe Corcoran

Jane Simmons, Secretary

Jolynn Vacca

Tammy Young

Sherry Balkenhol

The Executive Director of the Gallery is Lynn Greenwade. 479-394-3880 Gallery / 479-234-5440 Cell

Mena Art Gallery
P.O. Box 871
Mena, AR 71953
