



March 2020

P. O. Box 871 - 607 Mena Street, Mena, AR 71953
479-394-3880
email@MenaArtGallery.org
www.MenaArtGallery.org
Gallery Hours: Currently closed
or by appointment call 479-234-5440



**A note from
the Chairman,
Tiffany Lane:**

Were you able to attend our 75th Anniversary Celebration? What an extraordinary event, with lots of glitz and glam – and best of all, coinciding with the Ouachita Expressions Show. Many thanks to Gilda Meyers, Henry Moreno, and all the gallery members who worked behind the scenes to make this event a rousing success!

Mena Mayor Seth Smith signed a Proclamation declaring March the month of the Southwest Artists and Mena Art Gallery. We are honored.

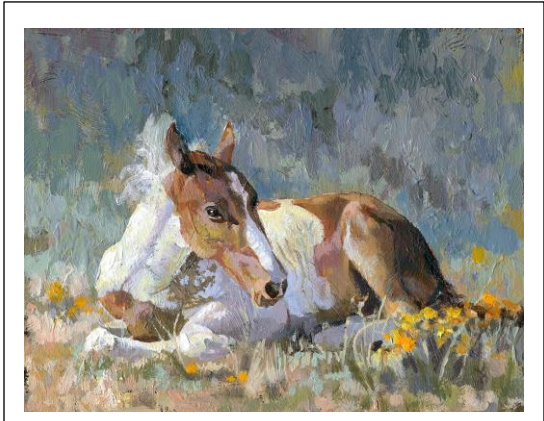
With events around the nation canceled, many of us are slowing down and enjoying the simpler aspects of life. Art is often therapeutic – a way to calm our anxiety and stress. You don't have to be an artist to reap the benefits. As we face this time of "unknowns," I encourage you to explore art, through either participation or observation, as a way to calm the spirit and renew the soul.

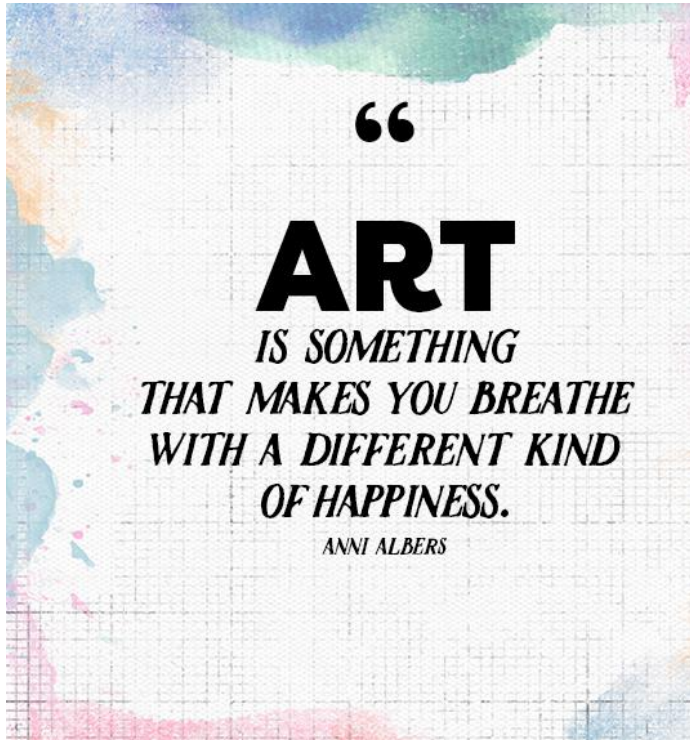
Small Works National Art Show

The Small Works show has been juried on line and the entrants were notified of their acceptance. Entries are on their way to the Gallery. Once received the show will be hung and judged. We will award prizes and give you lots of details on social media and our website.

It is impossible to predict whether we will be able to hold a reception at the beginning of the show. If not then, maybe toward the end of the show. We will do our best to honor both the artists and our local members and friends with adherence to whatever the guidelines are in place at the time for gathering groups of people.

In the meantime, please watch our Facebook page for updates. *Thanks, Lynn*





Here are a couple of pieces currently available:

Cedar Waxwings, Lorraine Timmerman, \$100



Lynn says:

While the Gallery is closed to the public currently, it is still filled with art work from our Ouachita Expressions Show. Jane Brace has been putting photos of that work on our Facebook page. Recently, one of our members saw one of those photos and fell in love with a painting of a gray bird by our beloved local artist, Bill Wells.

I met her at the Gallery and with proper social distancing we completed the sale. We have a blank spot now and she has the painting at home to brighten her staying-at-home-to-be-safe days.

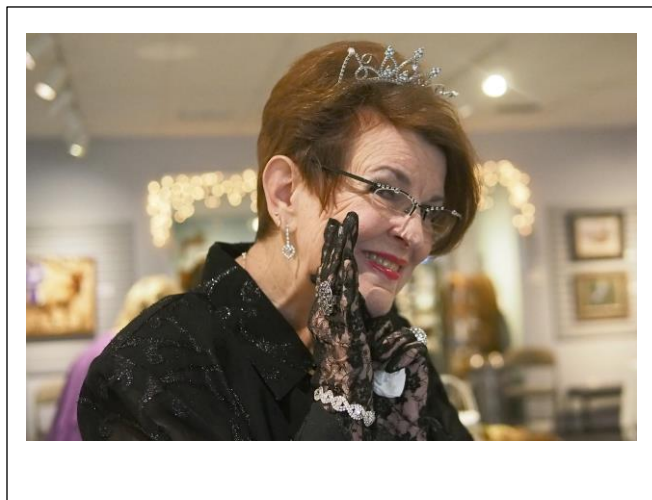
Sales can still take place and I think there is no better place for this art work right now than with you. If you see something you like please contact me, Lynn.



Tiger Eyes, Judith Cantrell, \$100



Photos from the March 7th Anniversary Gala! *(Thanks, Beth McMillen!)*



Membership Drive Continues . . .

We still have expenses, even when closed.

Please consider a membership or donation so we can be confident of coming out on the other side financially sound.

*Thank
you*

*We appreciate you all so very
much.*



Mena Art Gallery is owned and operated by SouthWest Artists, Inc., a non-profit corporation, and support is provided, in part, by the **Arkansas Arts Council**, an agency of the Department of Arkansas Heritage and the National Endowment for the Arts, and several local businesses and individuals. Donations are tax deductible and help ensure the continuing work of bringing art to the community of Mena and the surrounding area. Sponsorships and donations can be made on our website at www.menaartgallery.org.

If you prefer to have your name removed from our mailing list or would like to be removed from our email list please send an email to: email@MenaArtGallery.org or call 479-394-3880.

Membership in Mena Art Gallery is available at several levels:

Student: \$10:00 Individual: \$25.00 Family: \$45.00 Sustaining: \$5 (or more) Monthly

Membership forms are available at the Gallery or on the website www.MenaArtGallery.org

We encourage you to become a member in this progressive artistic community and hope you will remember Mena Art Gallery in your estate planning by leaving a legacy for the arts within the community for future generations.

BOARD OF DIRECTORS

Tiffany Lane, Chair

David Maddox

Diane Warren

Linda Ostman, Vice-Chair

Pamela Bennett

Joe Corcoran

Jane Simmons, Secretary

Jolynn Vacca

Tammy Young

Sherry Balkenhol

The Executive Director of the Gallery is Lynn Greenwade. 479-394-3880 Gallery / 479-234-5440 Cell