



June 2020

P. O. Box 871 - 607 Mena Street, Mena, AR 71953  
479-394-3880  
[email@MenaArtGallery.org](mailto:email@MenaArtGallery.org)  
[www.MenaArtGallery.org](http://www.MenaArtGallery.org)  
Gallery Hours:  
Wed – Sat 10 am to 3 pm



**We celebrated our 75<sup>th</sup> anniversary early in March.**

**Mena Art Gallery has been sharing art with our community for a loooonng time and we are determined to continue that work!**

You may have seen the sayings on the web recently which make the point of just how hard it would be to survive the current restrictions in our lives without the arts . . . visual arts, music, books, movies, etc. We owe a debt every day to the creators who share their hearts with us.

Your gallery offers a nice mix of local and national art. We just took down the Small Works National Show and are still accepting work for the combined Folk & Fiber Arts Show. It's not too late to participate. Photos of some of the new work are elsewhere in this newsletter. This show will run through the end of August.

The entry deadline for the second national show of the year, Art of the Heartland, is July 15<sup>th</sup>. If you plan to enter don't let the date sneak up on you! Please pass the word to your other artist friends as well. [www.smarterentry.com/callsforentry/swa](http://www.smarterentry.com/callsforentry/swa) to read the prospectus and enter.



**“Punkins in the Patch”**  
**A 3 foot X 5 foot wall hanging**  
By artist Niki Dempsey  
*Currently hanging in the gallery and available for purchase*

## A note from the Chairman, Tiffany Lane:



It's summer time, and the temperatures are letting us know it for sure! I finally was able to visit the gallery last week, and it was wonderful to step through the doors again and see the walls filled with art. There is something about seeing art in person that does a soul good. It renews the spirit and provides hope – another reason why the survival of our local art gallery is so important to the health of our community.

Please consider supporting your local gallery with a donation, or commit to being a sustaining member – for only \$5 per month! Just like many other businesses, our gallery has suffered a bit financially due to the lack of foot traffic in the last few months. We are dedicated to maintaining a strong art presence downtown, and we could use your help! Even a small donation - \$10, \$20, or \$30 can make a big difference in the survival of a non-profit.

Our Board is hoping to reconvene in person in the coming months. If you have any questions or concerns, please let me or a Board member know. We are here to serve our members!

Creating art is a primal behavior. Children, the world over, instinctively make. Every culture has art. Like language and laughter, art is a fundamental human behavior. Put very simply, art is a part of who we are. We need art because it makes us complete human beings.

- [SpeakArtLoud.wordpress.com](https://speakartloud.wordpress.com)



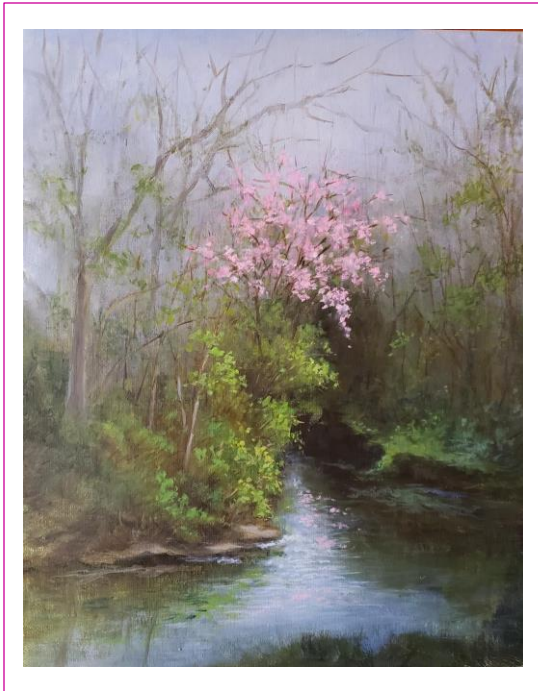
### **Shawl / wrap by Bridget Sigler in Merino wool, silk and cashmere.**

*Currently on display and available for  
purchase.*

A blue poster with white text. The title 'Call for Entry' is in a large, elegant script font. Below it, in smaller white capital letters, is 'ART OF THE HEARTLAND NATIONAL COMPETITION'. Further down, it says 'ENTRY DEADLINE: JULY 15, 2020' and 'JUDGE: TIM TYLER'. On the right side, there is a photograph of a woman's face looking upwards, wearing a large, wide-brimmed hat with a glowing yellow rim. The background of the photo is dark with white stars. At the bottom, it says 'TO ENTER GO TO: WWW.SMARTERENTRY.COM/CALLSFORENTRY/SWA'.

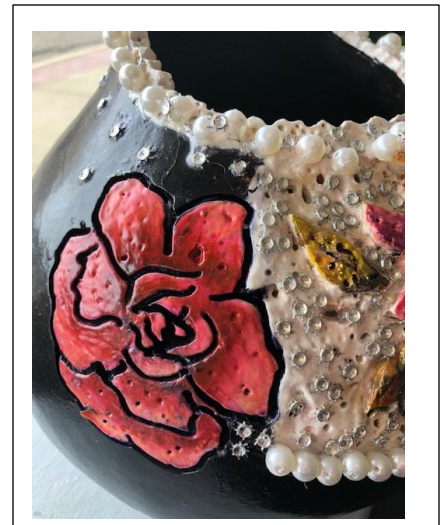
**The Peoples' Choice Winner in  
this year's Small Works  
National Show was "Foggy  
Mountain Redbud" by Ina  
Niday of Bentonville.**

Congratulations, Ina!



**Decorated  
Gourd by  
Penny  
Brickman**

*Available for  
purchase –  
come see it in  
person!*



**Art is not what  
you see but  
what you make  
others see . . .**

**- Degas**

Your Gallery is once again open normal hours, Wednesday through Saturday from 10 am to 3 pm.

If you need a private showing in order to feel comfortable being out in public, please let me know and we can set that up for you.

As always, there is no charge to enter and admire!

Mena Art Gallery is owned and operated by SouthWest Artists, Inc., a non-profit corporation, and support is provided, in part, by the **Arkansas Arts Council**, an agency of the Department of Arkansas Heritage and the National Endowment for the Arts, and several local businesses and individuals. Donations are tax deductible and help ensure the continuing work of bringing art to the community of Mena and the surrounding area. Sponsorships and donations can be made on our website at [www.menaartgallery.org](http://www.menaartgallery.org).

If you prefer to have your name removed from our mailing list or would like to be removed from our email list please send an email to: [email@MenaArtGallery.org](mailto:email@MenaArtGallery.org) or call 479-394-3880.

Membership in Mena Art Gallery is available at several levels:

Student: \$10:00      Individual: \$25.00      Family: \$45.00      Sustaining: \$5 (or more) Monthly

Membership forms are available at the Gallery or on the website [www.MenaArtGallery.org](http://www.MenaArtGallery.org)

We encourage you to become a member in this progressive artistic community and hope you will remember Mena Art Gallery in your estate planning by leaving a legacy for the arts within the community for future generations.

**BOARD OF DIRECTORS**

Tiffany Lane, Chair

David Maddox

Diane Warren

Linda Ostman, Vice-Chair

Pamela Bennett

Joe Corcoran

Jane Simmons, Secretary

Jolynn Vacca

Tammy Young

Sherry Balkenhol

The Executive Director of the Gallery is Lynn Greenwade. 479-394-3880 Gallery / 479-234-5440 Cell

Mena Art Gallery  
P.O. Box 871  
Mena, AR 71953

---